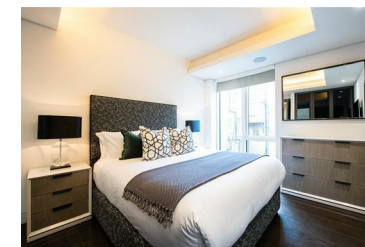
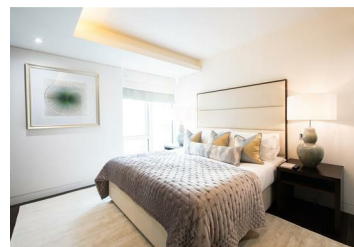


DUKE STREET APARTMENTS

LONDON W1K



THIRD FLOOR



This two bedroom apartment (1,282 sq ft / 120 sq m) is situated on the third floor of 65 Duke Street, a six storey Grade II listed building in Mayfair with lift and concierge. Moments from Selfridges department store, the building comprises sixteen luxurious one, two & three bedroom apartments over four upper floors, newly refurbished and presented to the highest standards. The apartment benefits from wood and stone floors, comfort cooling, a Creston home automation system and Miele integrated kitchen appliances.

Duke Street is well situated to the north of Mayfair, long regarded as one of London`s smartest and most prestigious neighbourhoods, and benefits from the excellent transport links provided by Oxford Street`s Marble Arch (Central Line) and Bond Street (Central and Jubilee Lines) underground stations. Green Park station (Jubilee, Piccadilly and Victoria Lines) is also a short walk away, as are the open green spaces of Grosvenor Square, Hyde Park and Green Park. The area also offers superb shopping amenities as well as world-class restaurants, bars and members' clubs for which the area is justifiably renowned.

Furnished/unfurnished

Viewing strictly by appointment with Mark Tunstall Property

Energy Efficiency Rating		
	Current	Potential
Very energy efficient - lower running costs		
(92 plus) A		
(81-91) B		
(69-80) C	73	73
(55-68) D		
(39-54) E		
(21-38) F		
(1-20) G		
Not energy efficient - higher running costs		
England & Wales	EU Directive 2002/91/EC	



IMPORTANT NOTICE

THIS BROCHURE AND THE DESCRIPTIONS AND MEASUREMENTS HEREIN DO NOT CONSTITUTE REPRESENTATION AND WHILST EVERY EFFORT HAS BEEN MADE TO ENSURE ACCURACY, THIS CANNOT BE GUARANTEED A COPY OF THE FULL ENERGY PERFORMANCE CERTIFICATE IS AVAILABLE UPON REQUEST.

INFO@TUNSTALLPROPERTY.CO.UK

+44 (0)20 3011 1775

Property Details:	Surveyed and Drawn By:
FLAT 3.04 65 DUKE STREET W1	BKR Sunnyhill House 3-7 Sunnyhill Road London, SW16 2UG Tel: 0845 257 2023 Fax: 0845 257 2024 info@bkrfloorplans.co.uk www.bkrfloorplans.co.uk C BKR 2016

APPROX. GROSS INTERNAL AREA *
1282 Ft² - 119.10 M²

Plans Drawn: 13.05.2016